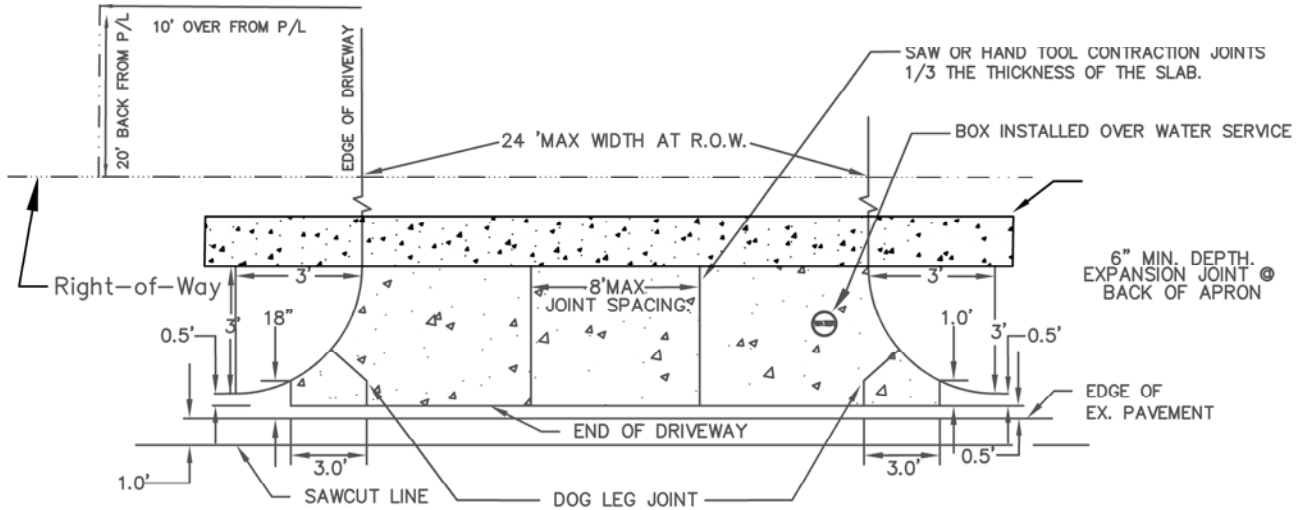


## NO CONCRETE CURB & GUTTER



**NOTE:**

On bituminous streets contractor must sawcut and replace min 18" strip of street section with same pavement type to match existing street section.

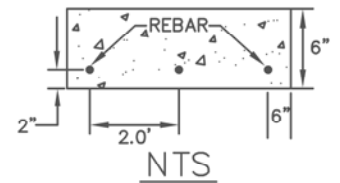
New concrete driveway shall be offset back 0.5' from existing bituminous pavement.

Driveway thickness shall be a minimum of 6" of concrete with 6" of class 5 for base

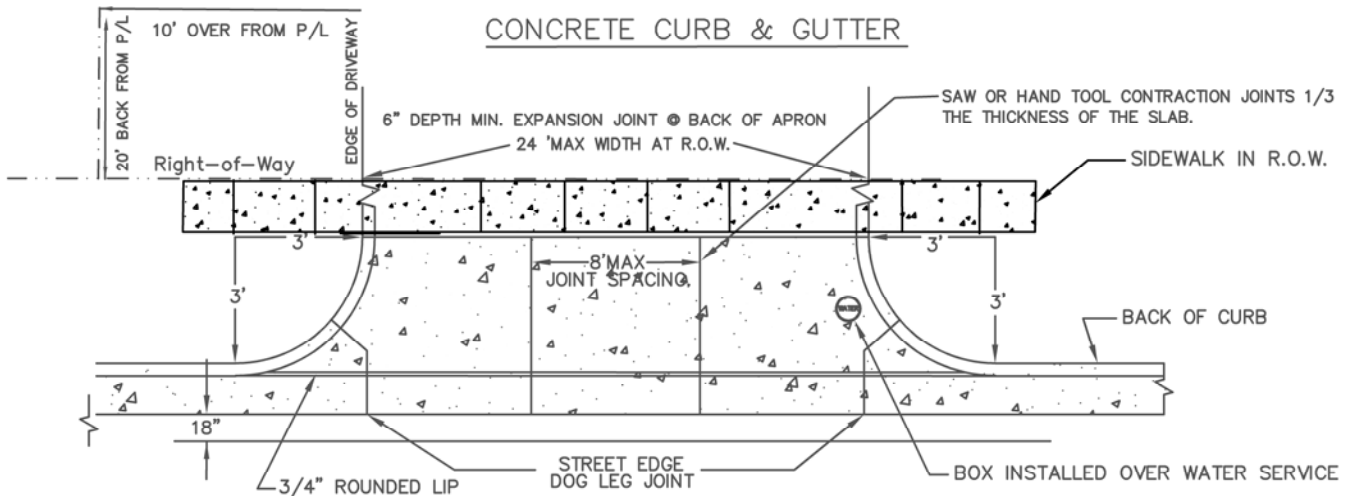
Use #4 (1/2") rebar slab reinforcement in r.o.w. placed @ 2' on centers.

If water shutoff is in the driveway pavement a cover as manufactured by mcdonald 74m1a series with an 8" opening frame & cover or equal shall be installed.

If radius is installed, a minimum of 3' is required.



## CONCRETE CURB & GUTTER



**NOTE:**

Contractor must sawcut and replace min 18" strip of street section with same pavement type to match existing street section.

Driveway thickness shall be a minimum of 6" of concrete with 6" of class 5 for base

Existing concrete curb section left in place must be a minimum of 5' to the next joint. sawcut a straight edge if more than 5' is left in place as long as proper drainage is maintained. otherwise remove to the next full joint.

Use #4 (1/2") rebar slab reinforcement in r.o.w. placed @ 2' on centers. drill and epoxy into existing concrete to a minimum depth of 4".

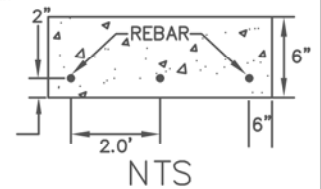
Place expansion felt behind surmountable curb prior to driveway installation.

If water shutoff is in the driveway pavement a cover as manufactured by mcdonald 74M1A series with an 8" opening frame & cover or equal shall be installed.

If radius is installed or existing curb is not surmountable, sawcut & remove all existing curb in front of driveway from radius to radius.

Highback curb must be poured monolithically with driveway, surmountable curb may be poured separately.

If a Radius is Installed, a Minimum 3' Radius is Required.



CITY OF  
CHANHASSEN

## CONCRETE RESIDENTIAL DRIVEWAY ENTRANCES WITH AND WITHOUT CURBS

REVISED: 12-19

ENGINEERING DEPARTMENT

PLATE NO.:

5208

FILE NAME: G:\ENG\SPCS\5208